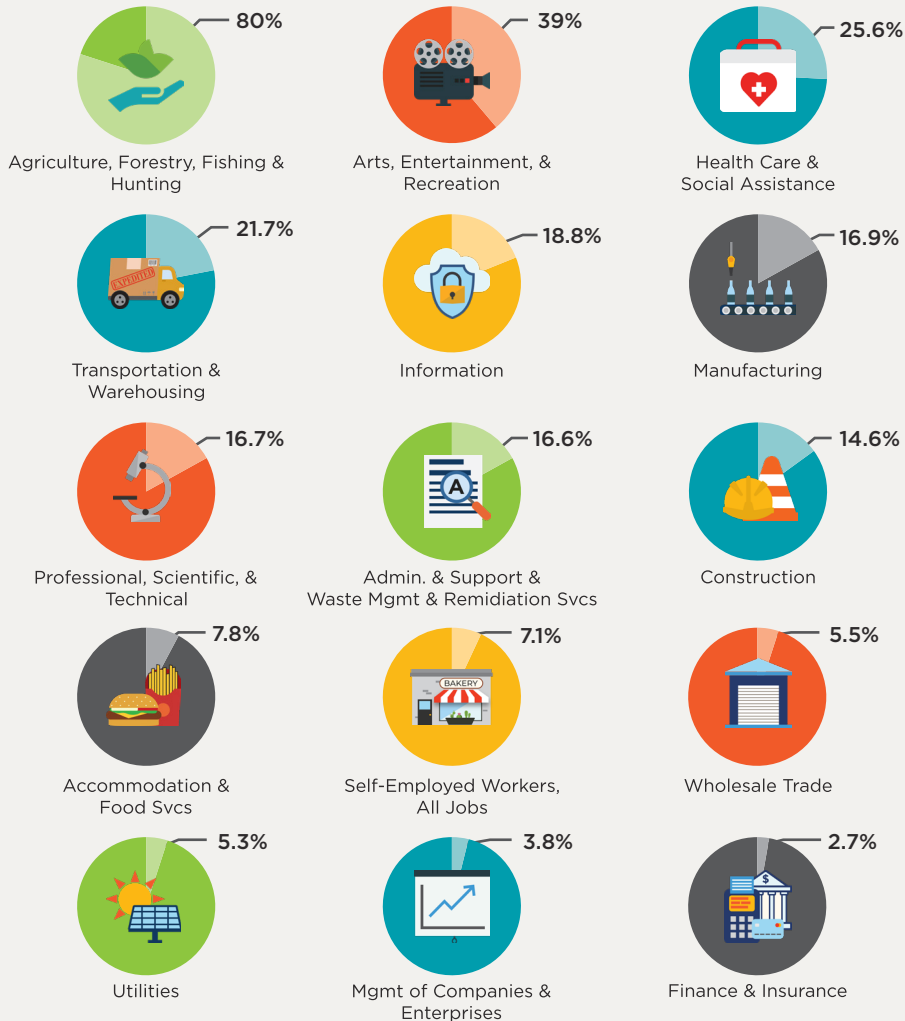


PHOENIX INDUSTRY

10^YR GROWTH



Source: Arizona Office of Economic Opportunity, Sept 2021

INDUSTRY EMPLOYMENT	#	%
Education, Healthcare & Social Assistance	164,815	19.6%
Professional, Scientific & Administrative	122,150	14.5%
Retail Trade	105,292	12.5%
Finance, Insurance & Real Estate	85,216	10.1%
Art, Entertainment, Food, Recreation	81,548	9.7%
Construction	71,545	8.5%
Transportation, Warehousing & Utilities	57,540	6.8%
Manufacturing	56,466	6.7%
Other Services, Except Public Administration	37,225	4.4%
Public Administration	27,329	3.2%
Wholesale Trade	16,305	1.9%
Information	12,824	1.5%
Agriculture & Mining	4,159	0.5%

Source: U.S. Census Bureau, ACS 2022 1-year Estimates.

HISTORIC MARKET RENT RATES	2019	2023	5-YR AVG
Office (per SF)	\$24.82	\$28.57	\$26.45
Retail (per SF)	\$18.06	\$22.38	\$19.70
Multifamily (per unit)	\$1,109	\$1,416	\$1,283
Industrial/Flex (per SF)	\$7.89	\$12.34	\$9.67

Source: CoStar

TAX RATES	Retails (Sales)	Construction Contracting	Commercial Real Estate Leasing
Phoenix	2.3%	2.3%	2.4%
Maricopa County	.70%	.70%	.50%
State of Arizona	5.6%	5.6%	0%

Sources: Arizona Department of Revenue; City of Phoenix.



Phoenix Community and Economic Development
200 W. Washington St., 20th Floor | Phoenix, AZ 85003
InvestinPhoenix.com | 602-262-5040