

# HISTORIC: Existing Historic Resources

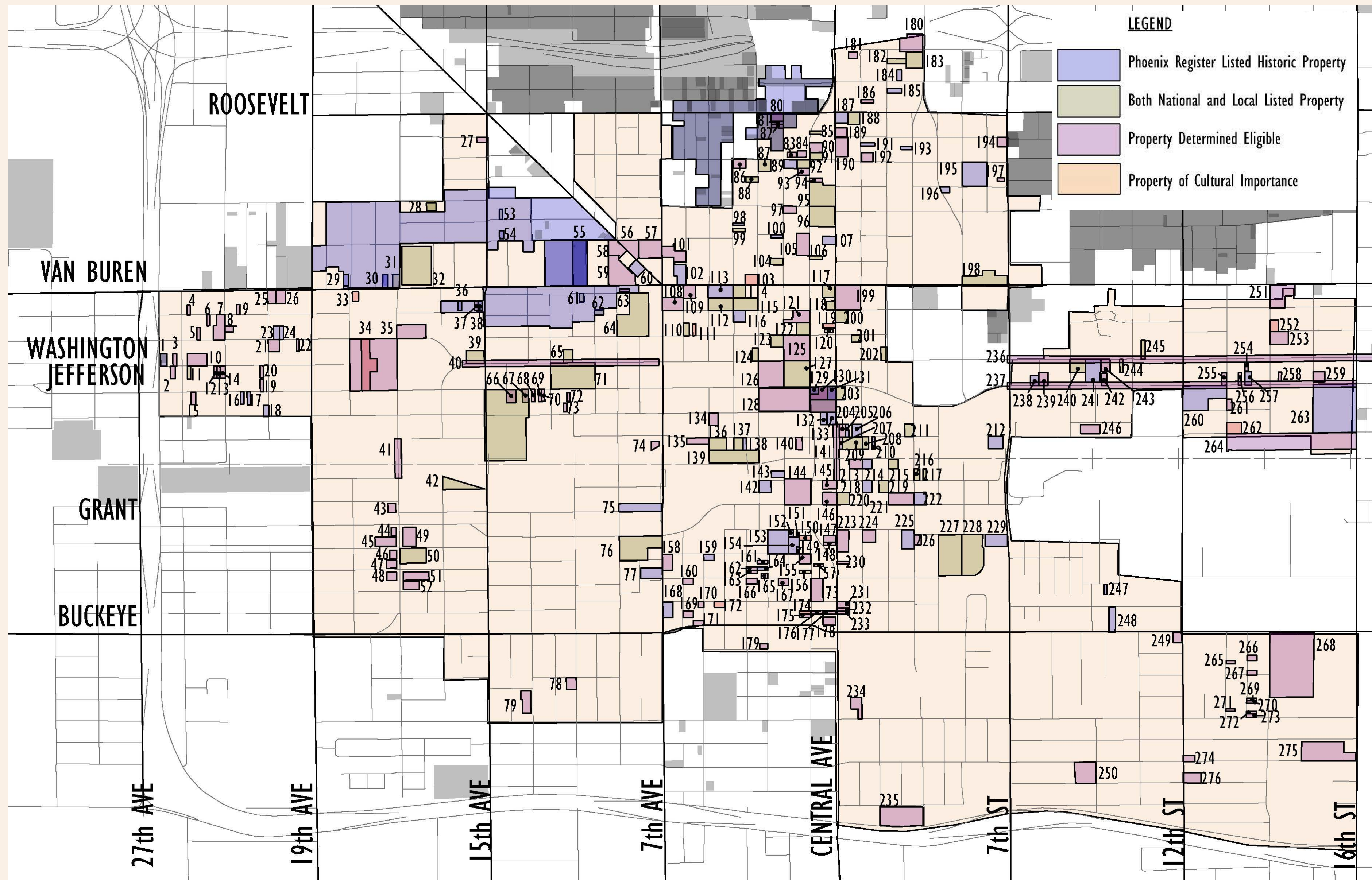
## DOWNTOWN RDA

### HISTORIC & CULTURAL

The Downtown RDA includes the original Phoenix Townsite, and many buildings of cultural and historic significance. These buildings are the authentic history and identity of Downtown RDA residents and neighborhoods, the City and the State.

#### Existing Historic Resources

There are a range of previously identified listed and identified register eligible properties throughout the downtown.



# HISTORIC: Existing Historic Resources

## DOWNTOWN RDA HISTORIC & CULTURAL

The Downtown RDA includes the original Phoenix Townsite, and many buildings of cultural and historic significance. These buildings are the authentic history and identity of Downtown RDA residents and neighborhoods, the City and the State.

### Existing Historic Resources

There are a range of previously identified listed and identified register eligible properties throughout the downtown.

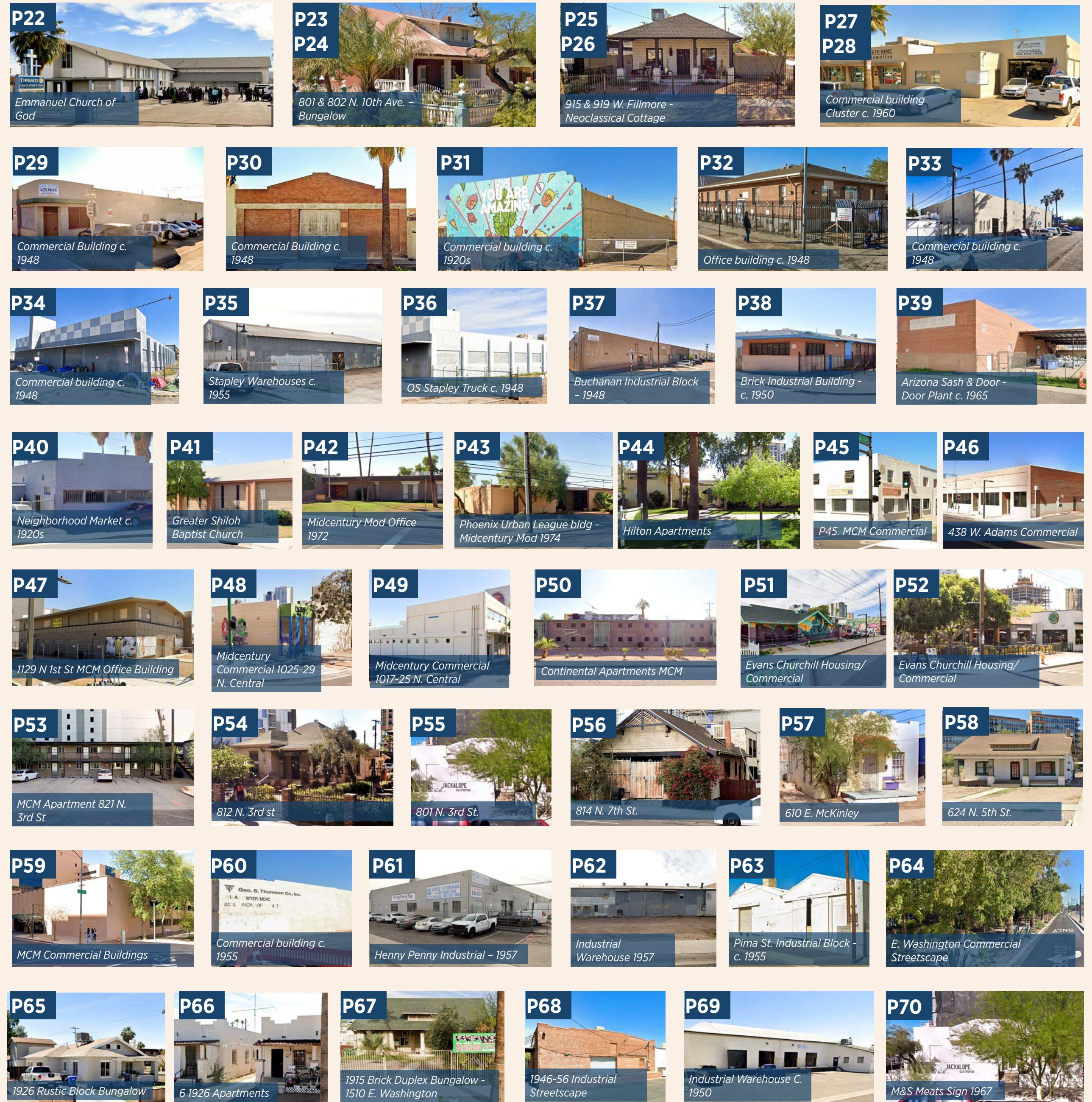
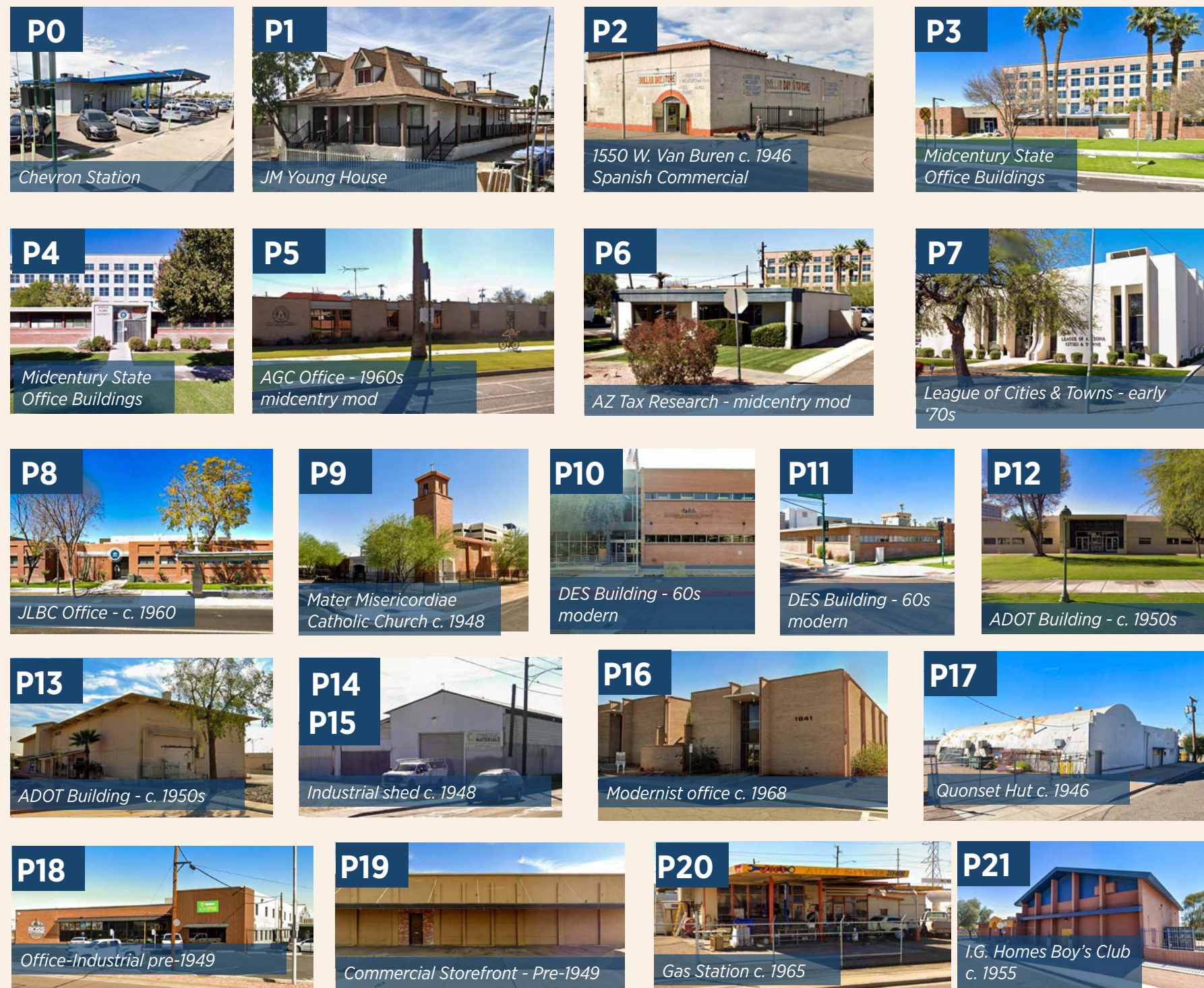
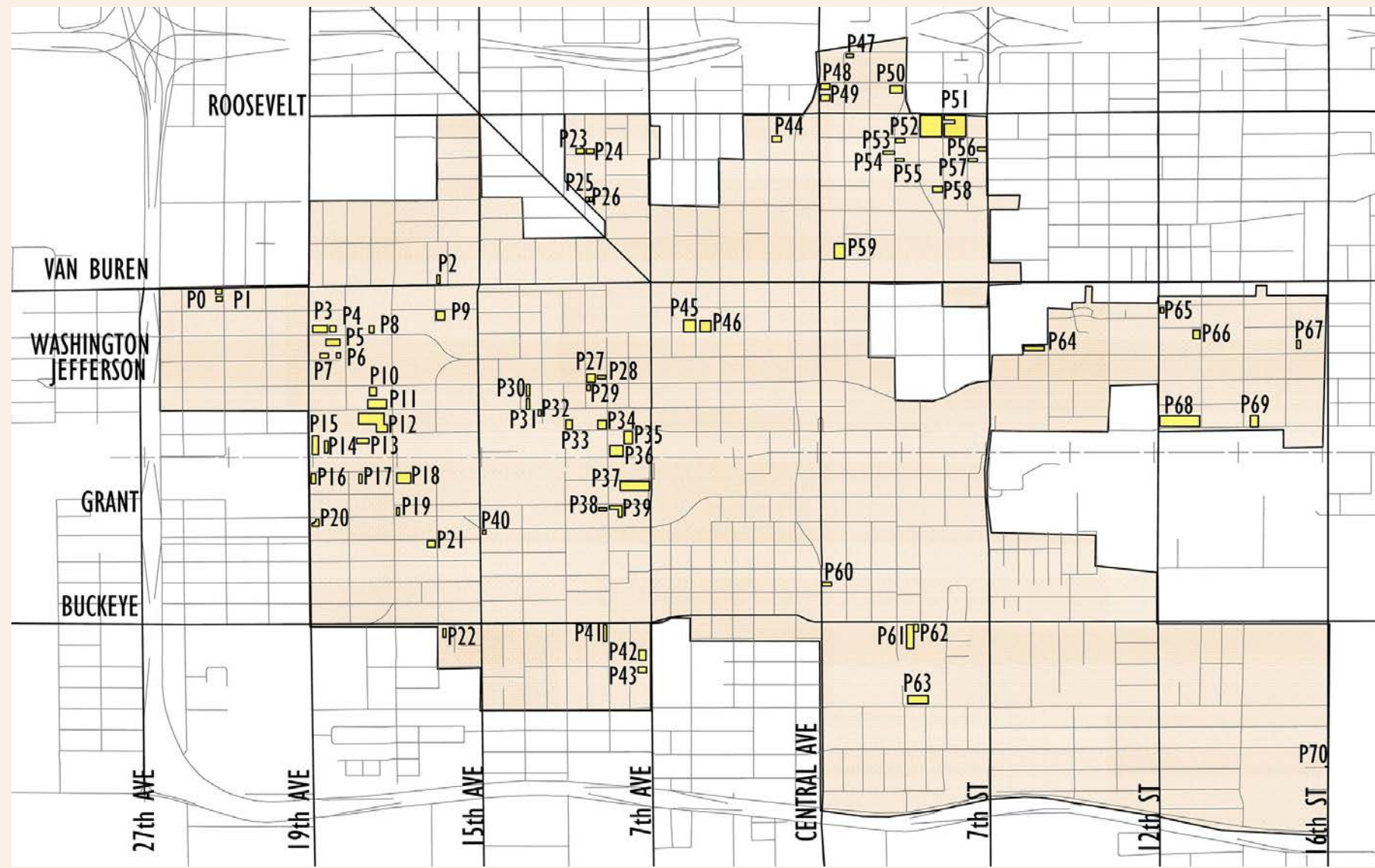
\*Couldn't select for info

\*\*Demolished

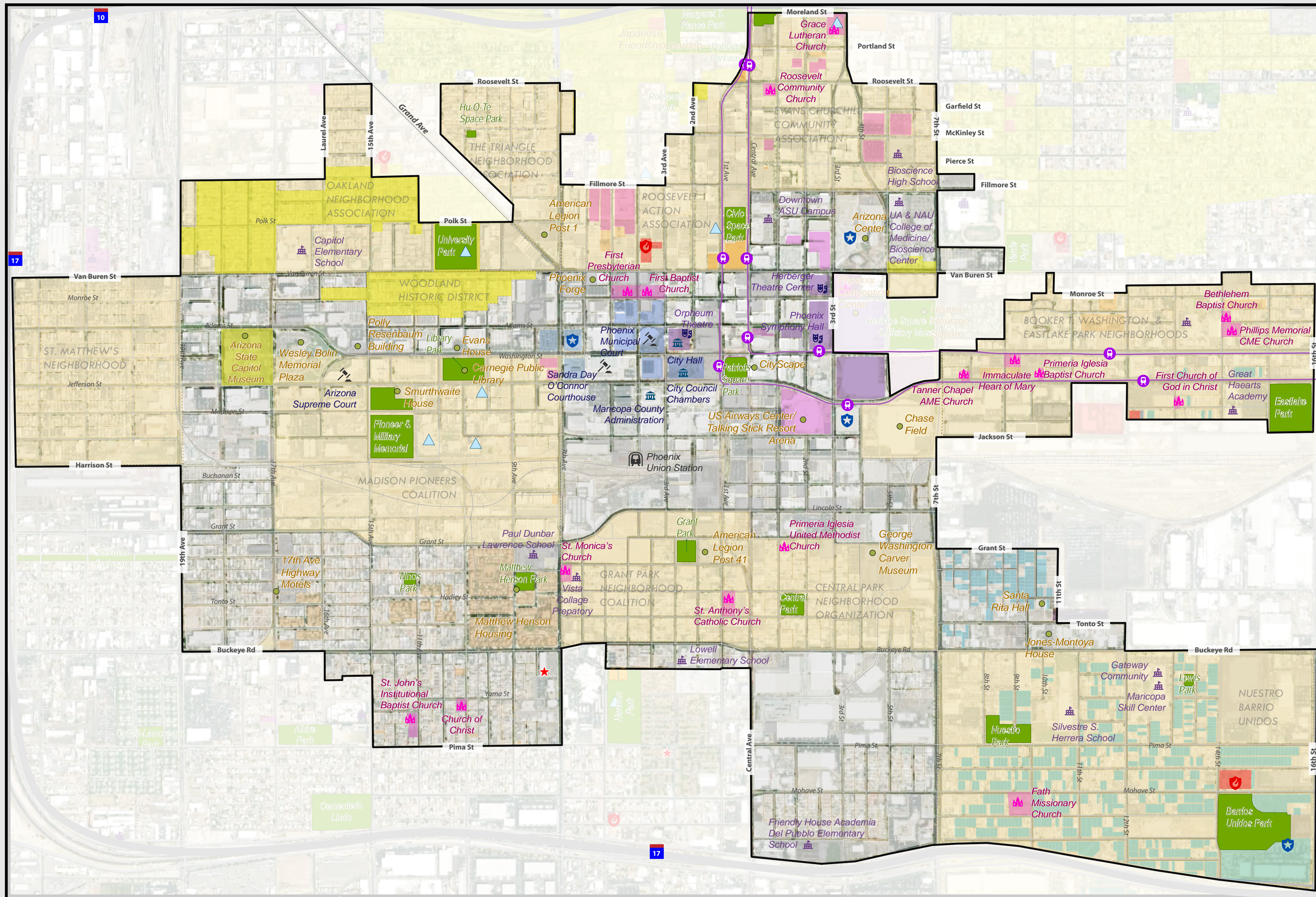
- |  |  |  |   |   |  |
|--|--|--|---|---|--|
| 1. Norton (William R.) House                           | 55. University Park Bath House                     | 105. YMCA  | 155. St.Monica's Church                           | 204. Electrical Shop and Supply Warehouse                   | 242. First Mexican Baptist Church          |
| 2. Wilson-Bartlett House                               | 56. Quebedeaux Chevrolet Showroom                  | 106. Phoenix Elementary School Dist #1 Admin.Bldg.   | 156. Lugo (Luis) Bakery **                        | 205. Arizona Hardware Supply Company Warehouse              | 243. Phoenix Christian Center              |
| 3. Wright (C.H.) House                                 | 57. Greenway (Luke) American Legion Post 1         | 107. England (A.E) Motors, Inc.                      | 157. Arizona Building Company House #11           | 206. Phoenix Merchandise Mart                               | 244. Swindall Tourist Inn                  |
| 4. 2142 W.Monroe St.                                   | 58. Egyptian Motor Hotel                           | 108. Imperial "400" Motel                            | 158. Friendly House                               | 207. Phoenix Steam Laundry                                  | 245. Ong's (Jim) Market                    |
| 5. Aitken (J.M.) House                                 | 59. Vance Bros.Bakery                              | 109. Angelus Furniture/ Pay'n Takeit #12             | 159. Classic Bungalow                             | 208. Western Wholesale Drug Company Warehouse               | 246. Ford-Levy Furniture Company           |
| 6. Smith-Lynch House                                   | 60. Stapley (O.S.) Block                           | 110. Day (Dud R.) Motor Company                      | 160. Adobe Rowhouse                               | 209. Chambers Transfer and Storage Co.Central Warehouse     | 247. Santa Rita Center                     |
| 7. Court of Palms                                      | 61. Eyrich-Kohl House                              | 111. First Presbyterian Church                       | 161. Arizona Building Company House #4            | 210. Fuller (W.P.) Paint Co.Warehouse                       | 248. Jones-Montoya House                   |
| 8. Barthell (O.C.) House                               | 62. Anderson-Johannes House                        | 112. Masonic Temple                                  | 162. Arizona Building Company House #5            | 211. Sun Mercantile Building                                | 249. Tang (K.L.) Grocery and Residence     |
| 9. North (L.H.) House                                  | 63. Arizona National Guard Building                | 113. First Baptist Church                            | 163. Morales (Carlos) House                       | 212. Arizona Citrus Growers Association Warehouse           | 250. Gospel Center Church and Dormitory    |
| 10. Dobson Court                                       | 64. Adams School                                   | 114. Welnick Arcade Market                           | 164. Arizona Building Company House #7            | 213. Home Builders Planing Mill Company Warehouse           | 251. Arnold's Pickles and Olives           |
| 11. Dougherty-Peterson House                           | 65. Evans (Dr.John M.) House                       | 115. Security Building                               | 165. Arizona Building Company House #9            | 214. Arizona Sash and Door Company Warehouse                | 252. Bethlehem Baptist Church              |
| 12. Winship (F.E.) House                               | 66. Smurthwaite House                              | 116. Hotel San Carlos                                | 166. Tapp (I.W.) Residence and Tapp's Dining Room | 215. Phoenix Seed and Feed Company Warehouse                | 253. Phillips (Lucy) Memorial C.M.E.Church |
| 13. Kalfus-Peabody House                               | 67. Marine Model Gas Station                       | 117. Heard Building                                  | 167. Vernacular Residence                         | 216. Gerardo's Building                                     | 254. Greenlee-Hammond House                |
| 14. Tovrea (Mrs.Lillian) House                         | 68. Arizona Cornice Works                          | 118. Gooding Block                                   | 168. St.Anthony's Catholic Church                 | 217. Arvizu's El Fresnal Grocery Store                      | 255. Loy-Ong Building                      |
| 15. 2137 W.Jefferson St.                               | 69. Harter Commercial Company                      | 119. Sixth Avenue Hotel                              | 169. Patterson (William H.) Elks Lodge #477       | 218. Blake, Moffitt and Towne Janitorial and Puper Supply   | 256. Robinson (W.A.) House                 |
| 16. Cronin (C.P.) House                                | 70. Piggly Wiggly Grocery Store                    | 120. Valley Plumbing and Sheet Metal                 | 170. Vernacular Adobe Residences                  | 219. Ong Yut Geong Wholesale Market Warehouse               | 257. Aldridge (Aubrey and Winstona) House  |
| 17. St.Claire-Ames House                               | 71. Carnegie Public Library and Park               | 121. Arizona Title Building                          | 171. Flores (Isabel) Grocery                      | 220. Anchor Manufacturing Co.                               | 258. Hayes (Zoe) House                     |
| 18. Roberts (Oscar) House                              | 72. Library Apartments                             | 122. Title and Trust Building                        | 172. Yaun Ah Gim Groceries                        | 221. Momsen, Dunnegan and Ryan Co.Warehouse                 | 259. Goode (Calvin and Georgie) House      |
| 19. Baker (S.K.) House                                 | 73. Gwilliam Grocery                               | 123. Orpheum Theater                                 | 173. Vernacular Adobe Residence                   | 222. Graham Paper Company Warehouse                         | 260. Washington (Booker T.) School         |
| 20. Court (H.J.and Grace) House                        | 74. Valley Machine Works                           | 124. Walker (J.W.) Building                          | 174. Sharp (M.J.) House                           | 223. First National Bank of Arizona, Central & Grant        | 261. Higher Ground Church of God in Christ |
| 21. McCord (Myron and Mary) House                      | 75. Arizona Sash, Door and Glass Company Warehouse | 125. First National Bank Plaza                       | 175. Adams (W.E.) House                           | 224. Primera Iglesia Metodista Unida                        | 262. Utah-ArizonaFreight Lines             |
| 22. Ingalls-Johnson House                              | 76. Dunbar (Paul Laurence) School                  | 126. City Council Chambers                           | 176. Sharp (W.C.) House                           | 225. Phoenix Linen and Towel Supply Co.                     | 263. Eastlake Park                         |
| 23. Grier (William and Mary) House                     | 77. Henson (Matthew) Public Housing Project        | 127. Maricopa County Courthouse                      | 177. H.Firpo Poultry House                        | 226. Queen Anne Cottage                                     | 264. Arizona Compress & Warehouse Company  |
| 24. Pinney (William L.and Nathalie T.) House           | 78. House of Prayer Church of God in Christ        | 128. Maricopa County Complex                         | 178. Sam's Central Service Station **             | 227. Carver (George Washington) High School                 | 265. Adobe House                           |
| 25. UMOM Lamplighter                                   | 79. St.John's Institutional Baptist Church         | 129. Luhrs Tower                                     | 179. La Estrella Tortilla Shop                    | 228. General Sales Company Warehouse                        | 266. Adobe House                           |
| 26. Circle K Hotel                                     | 80. Thompson (O.C) House                           | 130. Luhrs Post Office Station                       | 180. First Southern Baptist Church                | 229. Southwest Cotton Company                               | 267. Adobe House                           |
| 27. Dick's Court                                       | 81. Neoclassical Cottage                           | 131. Luhrs Building                                  | 181. City of Phoenix Fire Station No.4            | 230. J.H.Welsh & Son Contracting Co.                        | 268. U.S.Post Office                       |
| 28. Tweed (Judge Charles A.) House                     | 82. Neoclassical Cottage                           | 132. Stag Hotel                                      | 182. Pemberton (Sarah H.) House                   | 231. Cate Drugs   | 269. Adobe House                           |
| 29. Crown Filter Queen                                 | 83. Bank (Dr.Joseph) Medical Office Building       | 133. Pratt-Gilbert Building                          | 183. Grace Lutheran Church                        | 232. Hughes House   | 270. D Gutierrez (Phillip and Rosa) House  |
| 30. Bobby Brown Café                                   | 84. McKinley Medical Center                        | 134. General Electric Supply Warehouse               | 184. Barbara Jean Apartments                      | 233. Firpo (Henry and Angle) House                          | 271. Adobe House                           |
| 31. Copeland and Tracht Service Station                | 85. Knights of Pythias Building                    | 135. Santa Fe Freight Depot                          | 185. Knipe (Leighton G.) House                    | 234. Warehouse/ Arizona Cushions and Umbrella Manufacturing | 272. Wah (W.H.) and Company Grocery        |
| 32. Capitol School                                     | 86. Greystone Apartments                           | 136. Storage Warehouse                               | 186. Davis Apartments                             | 235. Friendly House Charter School                          | 273. Austin's Cash Market                  |
| 33. Pay'n Takit Store #25                              | 87. Seargeant-Oldaker House                        | 137. Chambers Transfer and Storage Company Warehouse | 187. Stephens (C.P.) DeSoto Six Motor Cars        | 236. Washington Street Streetscape                          | 274. Neighborhood Grocery                  |
| 34. Arizona State Capitol Building                     | 88. Pierce (Harry E.) House                        | 138. Arrow Van and Storage                           | 188. First Church of Christ Scientist             | 237. Jefferson Street Streetscape                           | 275. Food City                             |
| 35. Arizona State Office Building                      | 89. DeMund (Herman) House                          | 139. Phoenix Union Station                           | 189. Lincoln-Mercury-Phoenix, Inc.                | 238. Tanner Chapel Agrican Methodist Episcopal Chruuch      | 276. Southside Assembly of God             |
| 36. Dobbins-Day House*                                 | 90. Alexandria Court                               | 140. Sun-Ray Chemical Co.                            | 190. Mehagian's Furniture Store                   |   |  |
| 37. Ely (Sims) Jr.House                                | 91. Stoddard-Harmon House                          | 141. Central Avenue Underpass                        | 191. Merryman Funeral Home                        |   |  |
| 38. Armer House  | 92. Dunlap (Charles H.) House                      | 142. APS Building                                    | 192. Lamb Hotel                                   |   |  |
| 39. El Zaribah Shrine Auditorium                       | 93. Westward Ho Apartments                         | 143. Cobb Brothers Market Warehouse                  | 193. Farish (William A.) House                    |   |  |
| 40. Washington Street Streetscape                      | 94. KPHO TV Studio                                 | 144. Gas Works (Boundary Expansion)                  | 194. Burns Apartments                             |   |  |
| 41. 17th Avenue Underpass                              | 95. Hotel Westward Ho                              | 145. McGinnis (N.B.) Equipment Warehouse             | 195. McKinley School                              |   |  |
| 42. Shell Oil Company                                  | 96. U.S.Post Office                                | 146. Clarence Saunders Store #7                      | 196. Emerson (Louis) House                        |   |  |
| 43. Casa del Sol Court                                 | 97. Moeller Apartments                             | 147. Grant Park                                      | 197. The Ashley Apartments                        |   |  |
| 44. Holiday Inn  | 98. Evans (William) House                          | 148. El Portal Restaurant                            | 198. U of A Medical School/Phoenix Union          |   |  |
| 45. Morreale Hotel Auto Court                          | 99. Coe (H.M.) House                               | 149. Pyramid Cottage                                 | 199. Valley Center                                |   |  |
| 46. Gavin Motor Inn                                    | 100. Pugh (Charles) House                          | 150. Larson (C.A.) House                             | 200. Professional Building                        |   |  |
| 47. Drake Motel  | 101. Phoenix Laundry And Dry Cleaning Company      | 151. Duppa-Montgomery Adobe                          | 201. Hanny's                                      |   |  |
| 48. Arizona Motor Inn                                  | 102. City Center Motel                             | 152. American Legion Post 41                         | 202. Fry Building                                 |   |  |
| 49. Central Arizona Light and Power Company Substation | 103. Firestone                                     | 153. Cooley Auto Repair                              | 203. Jefferson Hotel                              |   |  |
| 50. King's Rest Hotel Motor Court                      | 104. Whitney (J.T.) Funeral Chapel                 | 154. Goettl Brothers Metal Products                  |   |   |  |
| 51. Monterey Lodge                                     |  |  |   |   |  |
| 52. Fountain Auto Court                                |  |  |   |   |  |
| 53. Elder Moffitt House                                |  |  |   |   |  |
| 54. Walbridge (Alfred P.) House                        |  |  |   |   |  |

# Historic: Potential Resources

There are several potential historic resources within the downtown - especially in the western portion of the downtown RDA. These potential resources provide a visual history of a rapid and dynamic period of population growth, cultural shifts, and development between 1950 and 1980. Because these resources are not designated as historic, they may be subject to alterations that make their designation as an historic resource unsustainable or they may be demolished to make way for new development.



# Cultural Resources: Points of Pride



## LEGEND

### Assets

- Phoenix Schools
- Theatres
- Churches
- Courts
- City Hall
- Points of Pride
- Senior Centers
- Fire Stations
- Police Stations
- Libraries
- Cooling Centers
- Union Station
- Rail Line
- Light Rail Stations
- Parks

### Boundaries

- RDA Boundary
- Neighborhoods
- RDA Parcels

### City Owned Properties

- Aviation
- Convention Center
- Ced
- Housing
- Fire
- Police
- Public Works
- Transit
- Other City-Owned Parcels

### Historic Properties

- Historic Individuals
- Historic Churches
- Historic District

**We want to hear from you!**  
 Tell us of the special sites and places in your area that have historic/cultural significance to your community.

